

Activity Blurb

Being an archaeologist is a lot like being a detective. You uncover clues about how people in the past lived.

Archaeologists learn about how they lived by looking at what they owned or their belongings which are called artifacts. They observe belongings, write things down about them, maybe draw them, and then try and find out more about it to learn how the people lived.

In this activity YOU will be the archaeologist! You will find a belonging in your house or maybe a family member's house and observe it like an archaeologist would. The point of this activity is to learn about your family's migration (where they lived before they came to their current homeland how they got here!) by learning about your chosen belonging. Migration is something that everybody in the world experiences at some point. It is when people move to a new place: that could be from home to home, land to land, city to city, country to country and more.

There are guiding questions to help you learn about your belonging and about migration. It will probably be helpful for you to talk to a family member, your mom, dad, grandmother or somebody who knows a little bit about the history of your belonging to get to learn more about it!

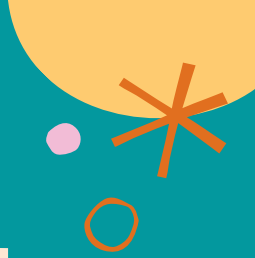
Also, if you want, after you finish making your own field journal you can share it with friends or with me through the google survey sheet so I can see your belonging too! You are also welcome to use my example field journal to compare your belonging and family's migration to mine!

Good Luck!





MY FIELD JOURNAL



Name:

Date:

Belonging Title

MATERIALS NEEDED:

- Your Belonging
- Pencil or Pen
- Printed Journal
- Parent or Family Member
- You!

BELONGING IDEAS:

- Locket
- Journal or Notebook
- Photo
- Tool
- Recipe
- Toy
- Book
- Art
- Article of Clothing

CAN YOU DESCRIBE IT?

SIZE

SHAPE

COLOR

WEIGHT

TEXTURE

MATERIAL



CAN YOU DRAW YOUR BELONGING?





QUESTIONS:

NOW THAT YOU HAVE OBSERVED YOUR ARTIFACT, WHAT MORE DO YOU NEED TO KNOW TO FIND OUT ABOUT YOUR FAMILY'S MIGRATION?



WHAT DO YOU THINK THE PURPOSE OF THE ARTIFACT WAS/IS?

HOW OLD DO YOU THINK YOUR ARTIFACT IS? (COULD YOU ASK A FAMILY MEMBER?)

WHO MADE IT?

WHERE IS IT FROM?



HOW DO YOU THINK IT ENDED UP IN YOUR HANDS?

WHO OWNED IT OR USED IT UP UNTIL NOW?



ANY OTHER INFORMATION?



QUESTIONS:

**HOW IS YOUR FAMILY'S MIGRATION SIMILAR OR DIFFERENT
TO THAT OF A PEER'S?**
(feel free to check out the example to use to compare with yours!)

SIMILARITIES



DIFFERENCES