

# FCRPS

## CULTURAL RESOURCE PROGRAM

U.S. ARMY CORPS OF ENGINEERS • BUREAU OF RECLAMATION • BONNEVILLE POWER ADMINISTRATION



## How Well Do You Know Your Dam Columbia River History?

Take A Quiz! Learn Some Facts!



# FCRPS CULTURAL RESOURCE PROGRAM

U.S. ARMY CORPS OF ENGINEERS • BUREAU OF RECLAMATION • BONNEVILLE POWER ADMINISTRATION



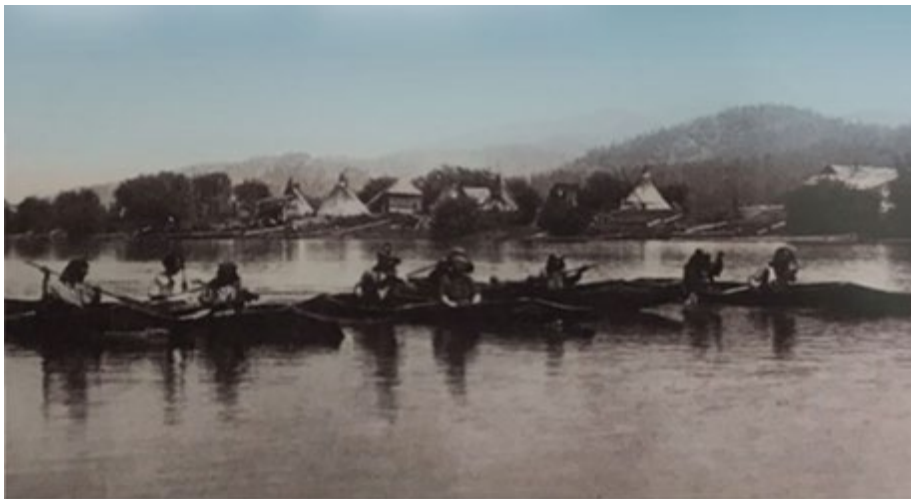
**The Columbia River and its tributaries** cut through thousands of years of history, shaping cultures and communities throughout the Pacific Northwest. Traces of this history remain along the banks of the rivers in the form of structures, archaeological and traditional cultural sites that are important to living communities today.



*Historic image of Palouse (Palus) Falls, a sacred place to several tribes of the Snake River region for its ties to legendary beings and stories, and as a natural resource gathering area.*

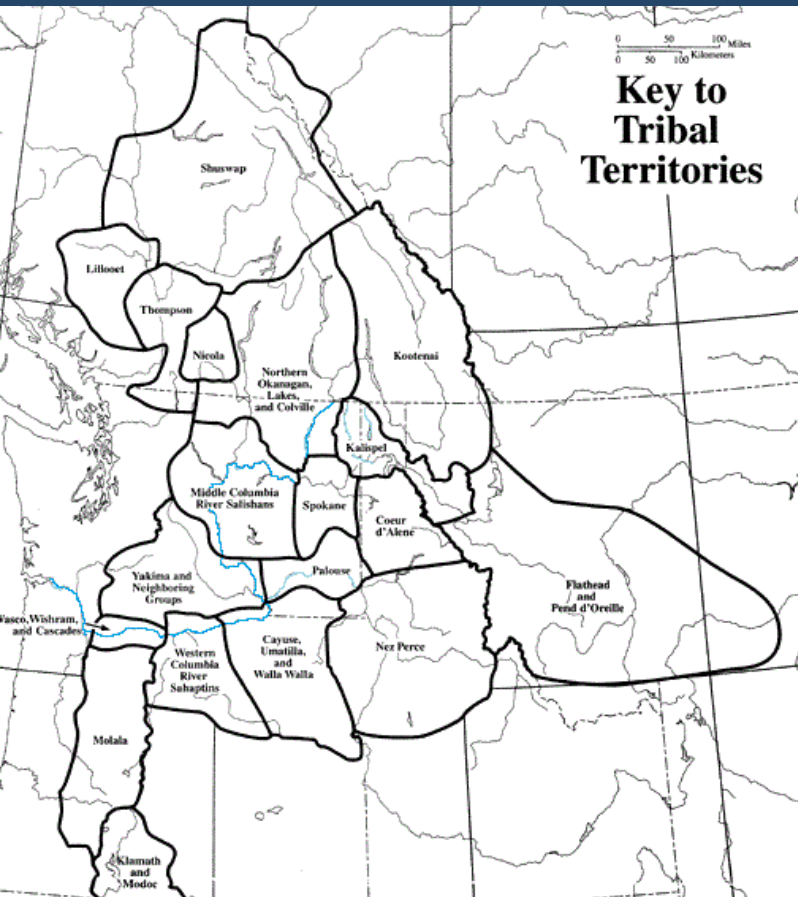


1. The Columbia River has been a major travel route for how many years?
  - a. 200
  - b. 1,000
  - c. 5,000
  - d. At least 13,000



# FCRPS CULTURAL RESOURCE PROGRAM

U.S. ARMY CORPS OF ENGINEERS • BUREAU OF RECLAMATION • BONNEVILLE POWER ADMINISTRATION



Tribal Territories of the Columbia River Basin (Columbia River in blue)

## 2. What historical event triggered major development of the Columbia River?

- a. World War I
- b. The 1929 Stock Market Crash
- c. The Dust Bowl
- d. The Great Depression



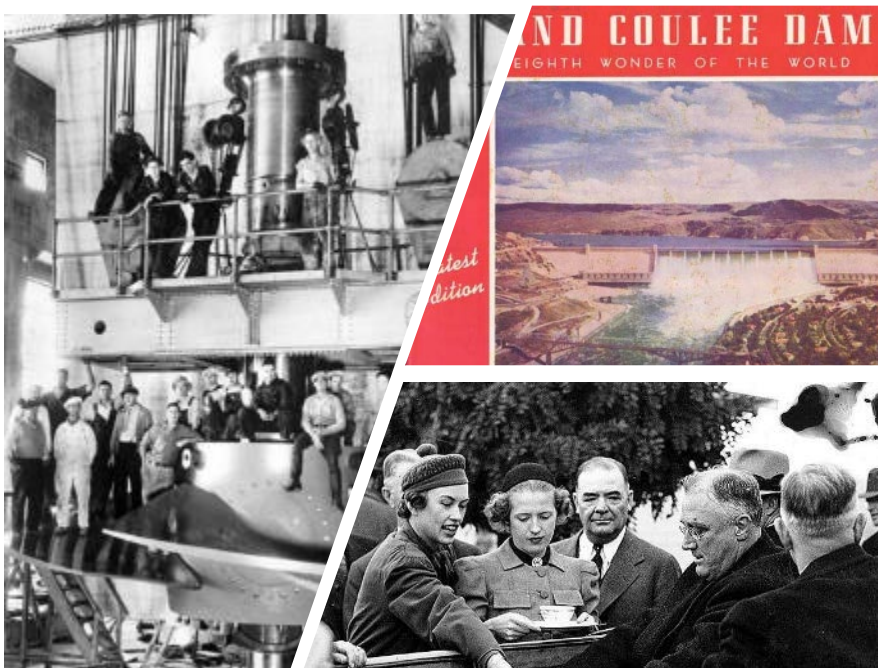
# FCRPS CULTURAL RESOURCE PROGRAM

U.S. ARMY CORPS OF ENGINEERS • BUREAU OF RECLAMATION • BONNEVILLE POWER ADMINISTRATION



Grand Coulee peak employment during 3-yr construction: 6,000 workers

When the employment figures were totaled from 1933–1939, the Bureau of Reclamation Histories put the total man-hours at 37,000,119 and compensation at \$34,650,244



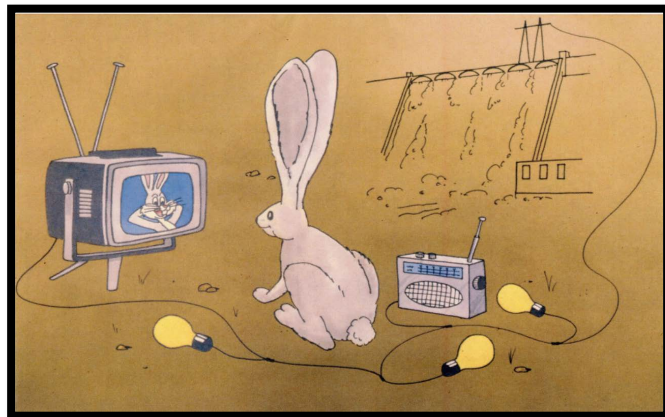
Turbine (left); “eight wonder of world” (upper right), FDR visiting Grand Coulee, 1937 (bottom right)

[https://depts.washington.edu/depress/grand\\_coulee.shtml](https://depts.washington.edu/depress/grand_coulee.shtml)

3. U.S. congressman Francis Culkin was critical of the Grand Coulee Dam project because he didn't think the regional population was large enough to be able to purchase the power generated by the dam.

Which animal did he say would be using the power instead?

- a. Grizzly bears
- b. Jackrabbits
- c. Ground squirrels
- d. Antelopes



# Grand Coulee Dam

Largest hydropower producer in the U.S.

Generates 21 billion Kwh annually  
(enough to power 2 million households for an entire year!)

Supplies power to 8 western states —

Washington, Oregon, Idaho, Montana, California, Nevada, Utah and Wyoming —

and even to parts of Canada

Over 1 million visitors recreate at Lake Roosevelt annually

<https://www.usbr.gov/pn/grandcoulee/pubs/factsheet.pdf>  
<https://www.smithsonianmag.com/history/grand-coulee-powers-75-years-after-its-first-surge-electricity-180958524/>



4. Bonneville Power Administration (BPA) supplied direct power generated from the dams to a “mystery load” during World War II.



Where was it?

- a. Spokane
- b. Lewiston Airport
- c. Hanford Site
- d. Libby Dam



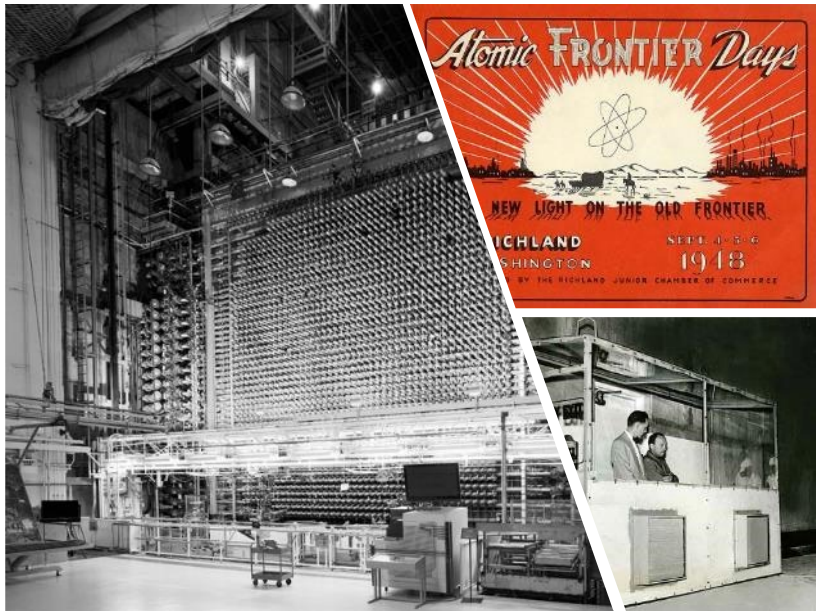
# FCRPS CULTURAL RESOURCE PROGRAM

U.S. ARMY CORPS OF ENGINEERS • BUREAU OF RECLAMATION • BONNEVILLE POWER ADMINISTRATION



The Grand Coulee Dam factored heavily into wartime power production during WWII. It provided the power needed for the plutonium production reactors at the nuclear production facilities at the Hanford site.

## Hanford B Reactor



It provided the electricity needed to produce aluminum, which was crucial for the airplane construction taking place at Boeing in Seattle.

As President Harry Truman said, "Without Grand Coulee and Bonneville dams it would have been almost impossible to win this war.

[https://depts.washington.edu/depres/grand\\_coulee.shtml](https://depts.washington.edu/depres/grand_coulee.shtml)  
<https://preservewa.org/cathedral-of-science/>

5. In 1941, folksinger Woody Guthrie worked for BPA for 30 days, writing 26 songs for the film “The Columbia.”

Which song is *NOT* part of the Columbia River songs?

- a. Pastures of Plenty
- b. This Land is Your Land
- c. The Greatest Thing that Man Has Ever Done
- d. Washington Talking Blues



# FCRPS CULTURAL RESOURCE PROGRAM

U.S. ARMY CORPS OF ENGINEERS • BUREAU OF RECLAMATION • BONNEVILLE POWER ADMINISTRATION



**Operation and maintenance** of federally-owned dams that are part of the Federal Columbia River Power System affect the remnants of our history by causing erosion that washes away archaeological sites, and by limiting Native Americans' access to traditional village sites, legendary sites that hold stories about tribal history, and important natural resource gathering areas.

1908



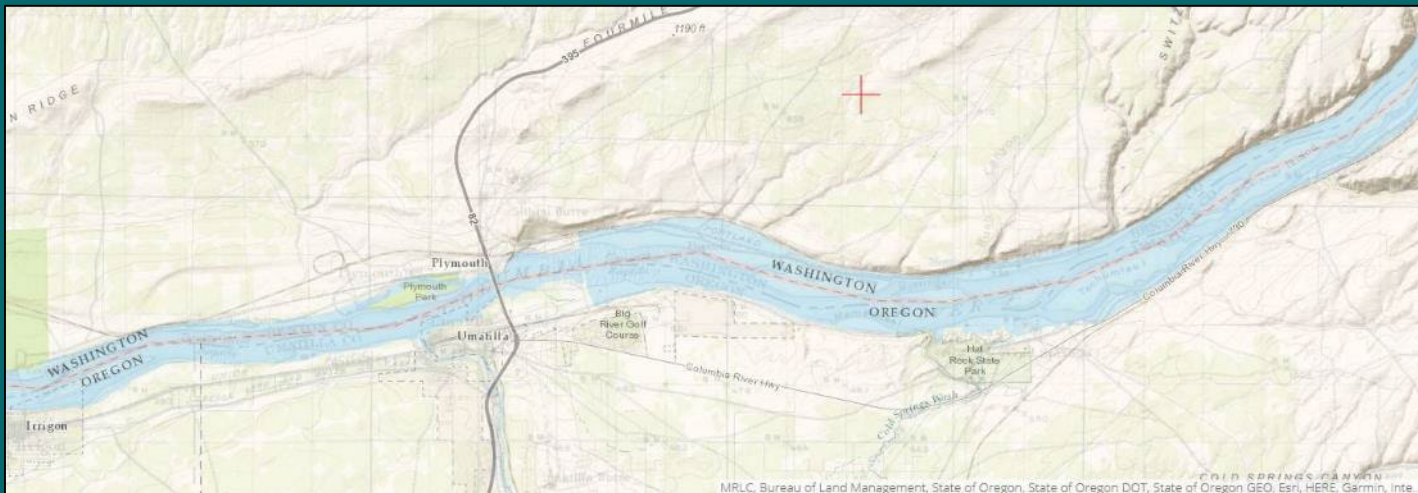
# FCRPS CULTURAL RESOURCE PROGRAM

U.S. ARMY CORPS OF ENGINEERS • BUREAU OF RECLAMATION • BONNEVILLE POWER ADMINISTRATION



**Operation and maintenance** of federally-owned dams that are part of the Federal Columbia River Power System affect the remnants of our history by causing erosion that washes away archaeological sites, and by limiting Native Americans' access to traditional village sites, legendary sites that hold stories about tribal history, and important natural resource gathering areas.

Today



# FCRPS CULTURAL RESOURCE PROGRAM

U.S. ARMY CORPS OF ENGINEERS • BUREAU OF RECLAMATION • BONNEVILLE POWER ADMINISTRATION



6. How many dams make up the Federal Columbia River Power System?

- a. 31
- b. 25
- c. 38
- d. 19



7. Which of these is *NOT* a congressionally authorized purpose of *most* of the FCRPS dams?

- a. Water storage
- b. Navigation
- c. Power generation
- d. Recreation





Congress authorized the U.S. Army Corps of Engineers and Bureau of Reclamation to construct, operate and maintain the 14 federal dams as one interconnected system to meet multiple specified purposes, including flood risk management, navigation, hydropower generation, irrigation, fish and wildlife conservation, recreation and municipal and industrial water supply. BPA is authorized to market and transmit the power generated by coordinated system operations.



## 8. Which of these dams is a National Historic Landmark?

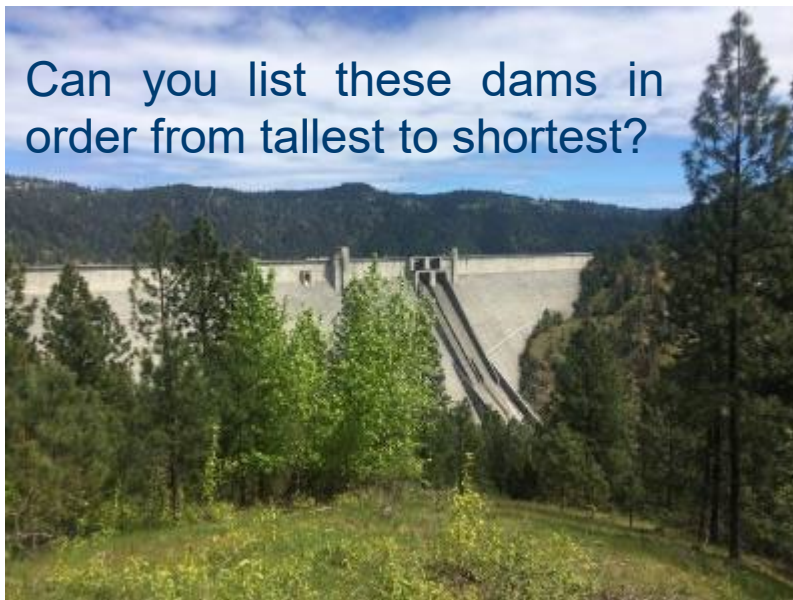
- a. Lower Monumental
- b. John Day
- c. Bonneville
- d. Hungry Horse



9. At a structural height of 717 feet, which of these FCRPS dams is the highest straight-axis concrete dam in the Western Hemisphere?

- a. The Dalles
- b. Dworshak
- c. Grand Coulee
- d. Albeni Falls

Can you list these dams in order from tallest to shortest?



# FCRPS CULTURAL RESOURCE PROGRAM

U.S. ARMY CORPS OF ENGINEERS • BUREAU OF RECLAMATION • BONNEVILLE POWER ADMINISTRATION



- a. Dworshak – 717 ft
- b. Grand Coulee – 550 ft
- c. The Dalles – 200 ft
- d. Albeni Falls – 90 ft

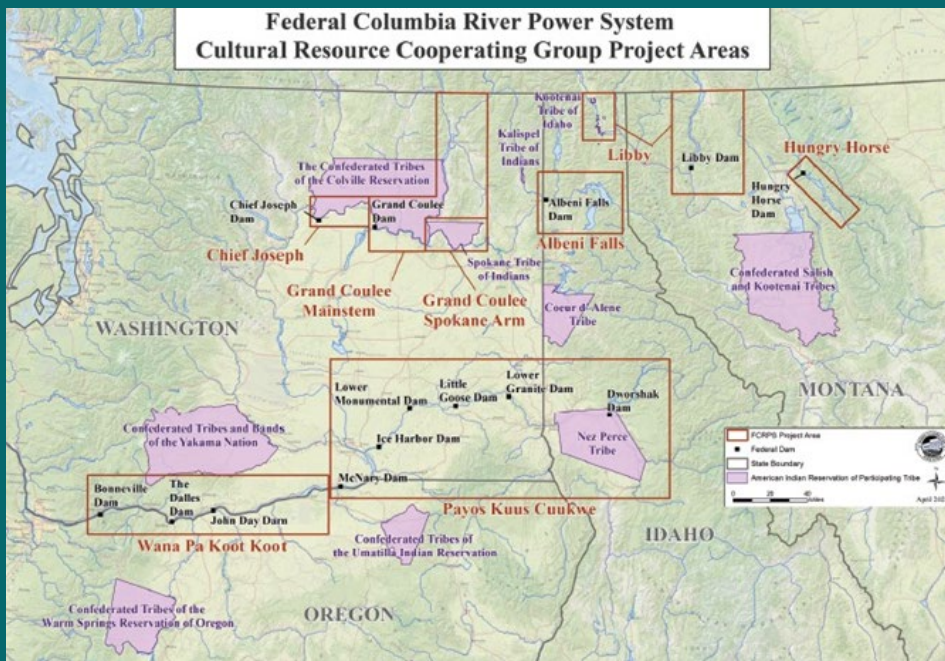


# FCRPS CULTURAL RESOURCE PROGRAM

U.S. ARMY CORPS OF ENGINEERS • BUREAU OF RECLAMATION • BONNEVILLE POWER ADMINISTRATION



The FCRPS Cultural Resources Program is a partnership with state, tribal, and federal technical staff that participate in cooperating groups. Together, specialists share information and develop solutions for the management of cultural resources.



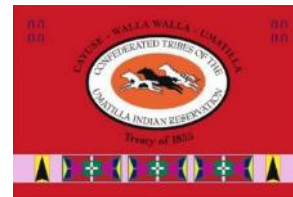


10. How many federally recognized tribes participate in the FCRPS Cultural Resource Program?

- a. 2
- b. 5
- c. 10
- d. 18

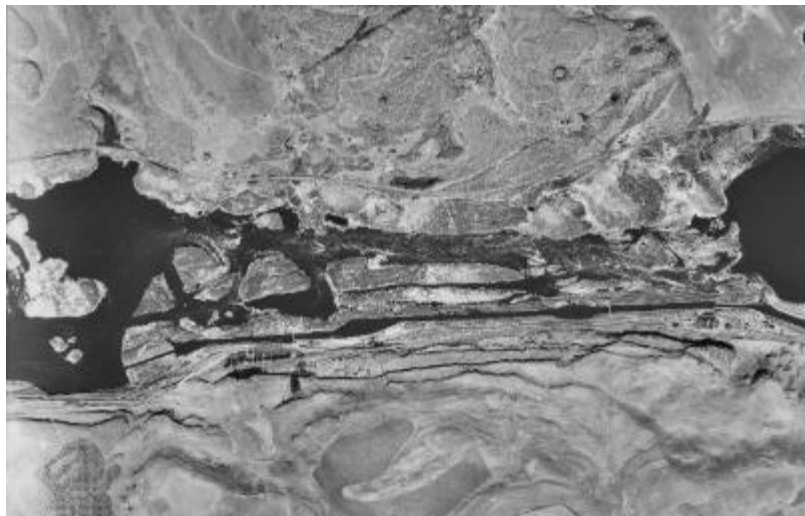
### 10. How many federally recognized tribes participate in the FCRPS Cultural Resource Program?

- a. 2
- b. 5
- c. 10
- d. 18



11. What is the name of this submerged geologic feature and important tribal fishing site directly beneath The Dalles Dam?

- a. Celilo Falls
- b. The Long Narrows
- c. Rooster Rock
- d. Kettle Falls



# FCRPS CULTURAL RESOURCE PROGRAM

U.S. ARMY CORPS OF ENGINEERS • BUREAU OF RECLAMATION • BONNEVILLE POWER ADMINISTRATION



The Long Narrows, before (black and white) and after (color) construction of The Dalles Dam





# FCRPS CULTURAL RESOURCE PROGRAM

U.S. ARMY CORPS OF ENGINEERS • BUREAU OF RECLAMATION • BONNEVILLE POWER ADMINISTRATION



The Long Narrows, before (black and white) and after (color) construction of The Dalles Dam



12. Which of these FCRPS dams is located on the South Fork of the Flathead River in northwestern Montana and within the homelands of native Pend d'Oreille and Kootenai and Salish tribes?

- a. Albeni Falls
- b. McNary
- c. Hungry Horse
- d. Lower Granite



13. Which of these FCRPS dams is *not* located on a tribal reservation?

- a. Dworshak
- b. Little Goose
- c. Grand Coulee
- d. Chief Joseph



# FCRPS CULTURAL RESOURCE PROGRAM

U.S. ARMY CORPS OF ENGINEERS • BUREAU OF RECLAMATION • BONNEVILLE POWER ADMINISTRATION



The U.S. Army Corps of Engineers, Bureau of Reclamation, and Bonneville Power Administration work closely with **Cooperating Group** participants to develop effective and appropriate treatments for cultural sites that are adversely affected by the **FCRPS**. This unique partnership has resulted in a broad spectrum of approaches for resolving adverse effects.



## Impacts to Cultural Resources

### Inundation

- Loss of Access

### Public Access

- Looting/vandalism of exposed sites
- Unauthorized recreational activities

### Visual & Other Indirect Effects

- Changed landscape
- Barge traffic
- Infrastructure related to operations & maintenance
- Marinas/boat ramps

### Changes to Natural Environment

- Distribution of plant communities
- Fish and wildlife
- Water quality

### Erosion

- Loss of landforms and artifacts/deposits



**As of October 2021, documented resources include:**

- 4,733 archeological sites and historic structures
- 786 traditional cultural properties



Agency and tribal staff monitor between 200 and 400 of these sites annually to assess their condition and identify potential impacts.



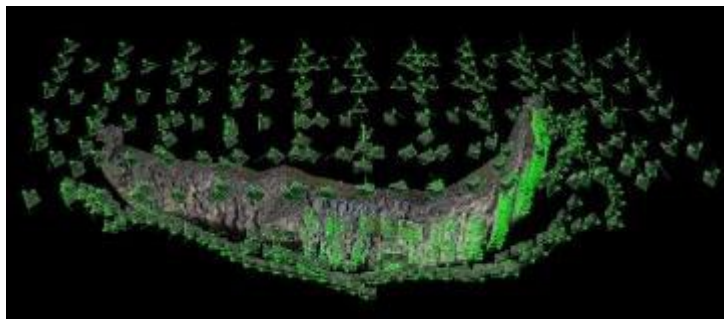
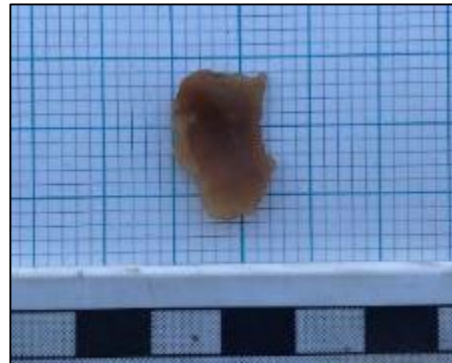
14. Approximately how many acres does the FCRPS program examine for impacts to cultural resources?

- a. 2,000
- b. 100,000
- c. 200,000
- d. 600,000



15. Approximately how many archaeological sites have been identified by the FCRPS Cultural Resource Program?

- a. 80
- b. 720
- c. 2,800
- d. 4,700





## 16. How does the operation and maintenance of federal dams affect cultural resources:

- a. Erosion
- b. Looting
- c. Redistribution of Traditional Plant Communities
- d. Visual impacts
- e. All of the above



# FCRPS CULTURAL RESOURCE PROGRAM

U.S. ARMY CORPS OF ENGINEERS • BUREAU OF RECLAMATION • BONNEVILLE POWER ADMINISTRATION



A **petroglyph** is an image carved, incised or scratched into stone.



A **pictograph** is a painting on stone, using natural pigments.

Graffiti and vandalism affect many rock image sites. Careful graffiti removal and camouflage techniques are sometimes used to address these effects, along with public education and outreach on the importance of these traditional cultural sites.



## 17. Which of these images is a pictograph?



a



b



c



d

18. What type of treatment has been used to address negative impacts to archaeological sites and cultural resources?

- a. Artifact collections analysis
- b. Bank stabilization
- c. Revegetation of native species
- d. All of the above



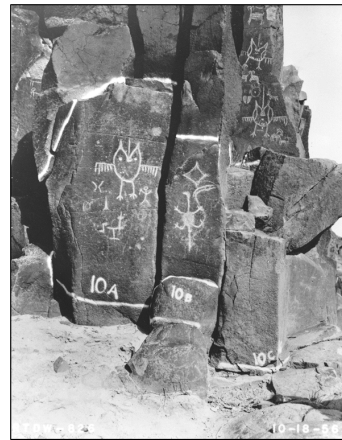
19. What type of treatment has been used to address negative impacts to historical resources?

- a. Building restoration
- b. Excavation/data recovery
- c. Youth culture camps
- d. All of the above



20. How many pictographs and petroglyphs removed from the basalt walls now below The Dalles Dam have been relocated to the *Temani Pesh Wa Trail* in Washington?

- a. 62
- b. 107
- c. 38
- d. 19



21. How do the Columbia River tribes continue to use these important cultural resources today?

- a. Fishing
- b. Plant and other resource collection
- c. Access legendary sites that help tell a story
- d. All of the above





# Thank You for Participating!

## ANSWER KEY

1.	D	11.	B
2.	D	12.	C
3.	B	13.	B
4.	C	14.	D
5.	B	15.	D
6.	A	16.	E
7.	A	17.	C
8.	C	18.	D
9.	A	19.	D
10.	C	20.	C



# FCRPS CULTURAL RESOURCE PROGRAM

U.S. ARMY CORPS OF ENGINEERS • BUREAU OF RECLAMATION • BONNEVILLE POWER ADMINISTRATION



This slideshow will be made available for public use.  
For additional information, please visit or contact:

<https://legacy.bpa.gov/efw/CulturalResources/FCRPS/CulturalResources/Pages/default.aspx>